



PGA TOUR Cycle to the Shore 2014

Estimated Coverage September 20

ATTENTION REST STOP CAPTAINS – Please wait for the Sweep Vehicle to notify you the last cyclist has passed before closing the rest stop

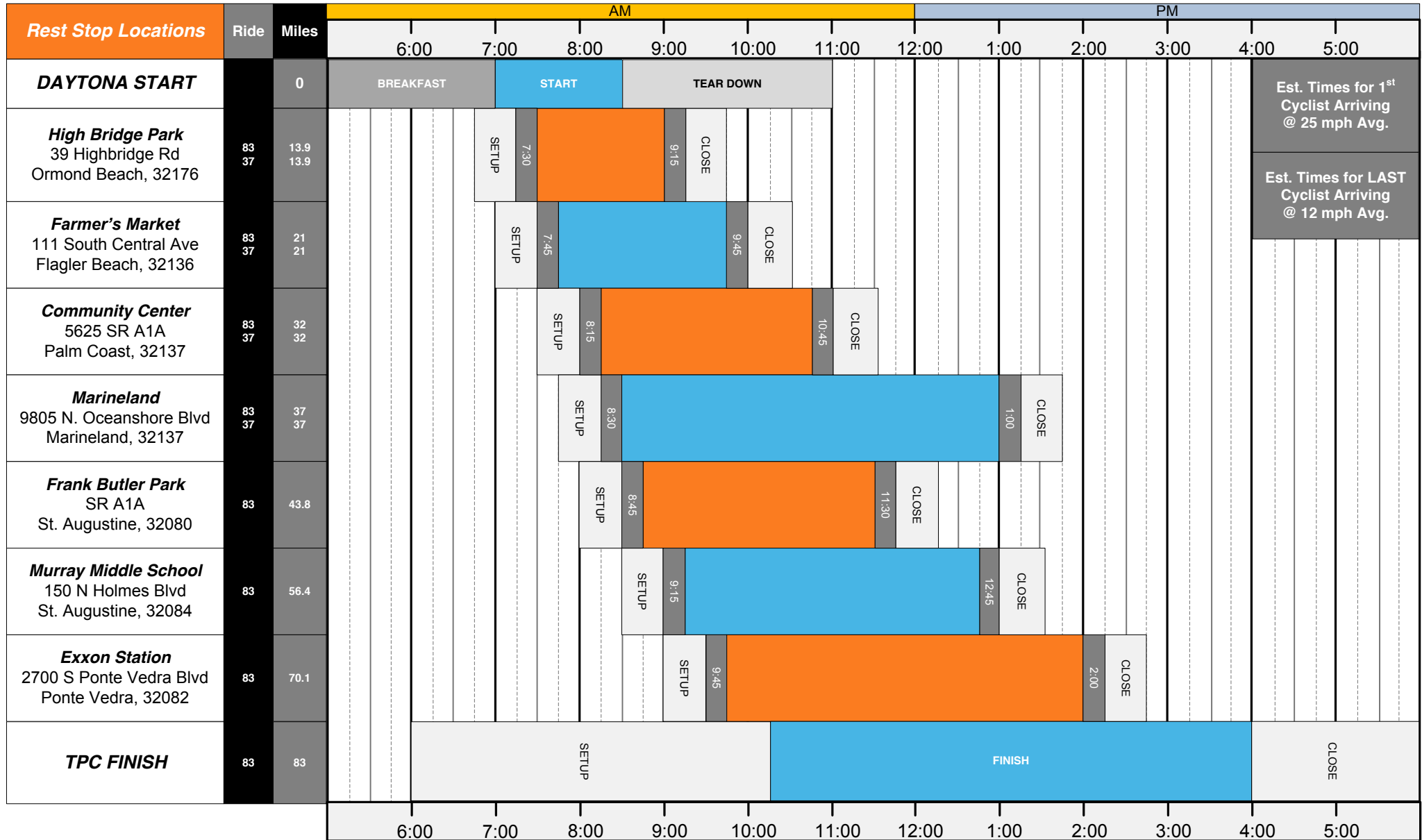
Rest Stop Locations	Ride	Miles	AM						PM									
			6:00	7:00	8:00	9:00	10:00	11:00	12:00	1:00	2:00	3:00	4:00	5:00				
TPC START		0	SETUP	REGISTRATION	START	RESET												Est. Times for 1 st Cyclist Arriving @ 25 mph Avg.
Exxon Station 2700 S Ponte Vedra Blvd Ponte Vedra, 32082	83 106	13.3 13.3		SETUP	7:45		9:30	CLOSE										
Publix 955 SR 16 St. Augustine, 32084	83 106	25.3 25.3		SETUP	8:00		10:30	CLOSE										
Windswept Acres Park 5385 SR A1A S St. Augustine, 32080	83 106	33 33		SETUP	8:30		10:45	CLOSE										
Marineland 9805 N. Oceanshore Blvd Marineland, 32137	83 106	47.2 47.2	SETUP	REGISTRATION	7:30		12:00	CLOSE										
Bing's Landing 5880 SR A1A S Palm Coast, 32137	83 106 59 37	51 51 3.8 3.8		SETUP	7:40		12:30	CLOSE										
Wadsworth Park 2200 Moody Rd (US 100) Flagler Beach, 32136	83 106 59 37	62.7 62.7 15.5 15.5		SETUP	7:45		1:30	CLOSE										
High Bridge Park 39 Highbridge Rd Ormond Beach, 32176	83 106 59 37	67.8 67.8/90 20.6/43 20.6		SETUP	8:15		4:00	CLOSE										
James Ormond Park 3268 Old Dixie Hwy Ormond Beach, 32174	83 106 59 37	87.54 40.34		SETUP	9:00		4:00	CLOSE										
DAYTONA FINISH	83 106 59 37	83 106 59 37		SETUP								FINISH						CLOSE



PGA TOUR Cycle to the Shore 2014

Estimated Coverage September 21

ATTENTION REST STOP CAPTAINS – Please wait for the Sweep Vehicle to notify you the last cyclist has passed before closing the rest stop



Est. Times for 1st
Cyclist Arriving
@ 25 mph Avg.

Est. Times for LAST
Cyclist Arriving
@ 12 mph Avg.